

AVO HARMONY 135-50

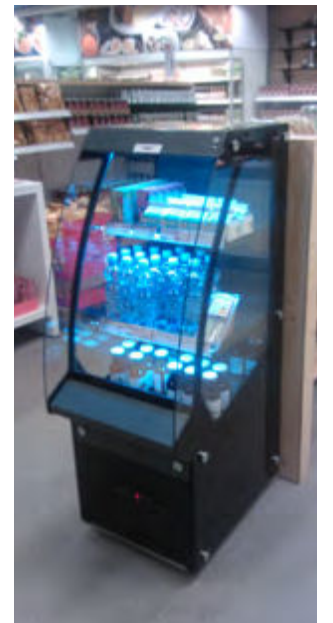


PROFESSIONAL OPEN FRONT COOLER



MAIN FEATURES

- Small foot print
- Easy access
- Adjustable shelves
- Easy to maintenance
- Easy to brand - and rebrand!
- High product visibility
- High quality LED light integrated to the shelves
- Green refrigerants (R290)
- Electronic thermostat with automatic defrosting
- Night curtain
- Four rotating wheels
- Full glass sides



OPEN FRONT COOLERS

TECHNICAL DETAILS

| | AVO Harmony 135-50 |
|------------------------------------|--------------------|
| Net weight (kg) | 83 |
| Gross volume (l) | 143 |
| Net volume (l) | 120 |
| External dimensions H x W x D (mm) | 1350 x 495 x 700 |
| Internal dimensions H x W x D (mm) | 780 x 370 x 430 |
| Power input W (220-240V, 50Hz) | 480 |
| Defrosting | Automatic |
| Lighting | 3 x horizontal LED |
| Compressor | Cubigel TB12 |
| Filling quantity (g) / Refrigerant | 140/R290 |
| Energy consumption (kWh/24h) | 7,6 |
| Evaporator type | Finned coil |
| Condenser type | Finned coil |
| Temperature control | Electronical |

AVO Harmony 135-50

SHELF DIMENSIONS

| | |
|------------------------------------|-----------|
| Ajustable shelf W x D (mm) | 420 x 285 |
| Amount of adjustable shelves (pcs) | 2 |
| Bottom layer W x D (mm) | 435 x 365 |

TRANSPORTATION

| | |
|----------------------------------|------------------|
| Gross weight (kg) | 105 |
| Package size H x W x D (mm) | 1500 x 550 x 770 |
| Quantity in 20ft container (pcs) | 30 |
| Quantity in 40ft container (pcs) | 63 |
| Quantity in 13,6m truck (pcs) | 72 |

OPTIONS

| | |
|-------------------------|--|
| Full branding | |
| Body color (RAL-system) | |
| Shelf talkers & springs | |
| Identification marking | |

TEMPERATURES

| | |
|--------------------------------|---------------------|
| Temperature range | +1°C.. +6°C |
| Operating conditions min - max | +10°C.. +25°C/65%RH |

| | | | | | |
|---|----------------------|------------------|-----------------|-----------------|---|
| H x W x D H 1350mm W 495mm D 700mm | HC R290 | 0.25 L 248pcs | 0.5 L 84pcs | 13.6 M 72pcs | H x W x D H 1500mm W 550mm D 770mm |
| KG 83kg | RANGE +1°C.. +6°C | 0.33 L 168pcs | 0.33L 115pcs | 40ft 63pcs | KG 105kg |