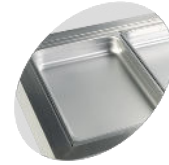




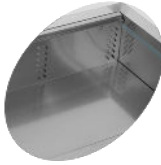
## CW2/V Cooling Well GN1/1

### Product features:

- Stainless steel 304
- Accepts GN1/1 pans (Not supplied)
- Ventilated cooling
- Electronic thermostat
- Suitable for build-in



Designed for GN1/1 pans,  
not supplied



Ventilated cooling

### Technical data

Climate Class	4
Temperature Range, °C	2 to 8
Gross Volume, l.	111
Net. Volume, l.	110
Capacity, GN1/1	2
External Dimensions, WxDxH	788x688x636
Build-in Dimensions, WxD	755x655
Packing Dimensions, WxDxH	842x760x742
40'ft Container load, pcs.	132
Lid	No
Dividers	3, 520x20
Exterior	SS304
Interior	SS304
Voltage/Frequency, V/Hz.	220-240/50
Rated Input Power, W.	250
Energy Consumption. kWh/h. (Cold pans with lid)	0.14
Gross Weight, kg.	49
Net. Weight, kg.	46
Noise Level, db(A)	42
Type of Cooling	Ventilated
Type of Defrost	Automatic
Type of Control	Electronic
Thermometer	Yes
Refrigerant	R134a
Charge, g.	150