

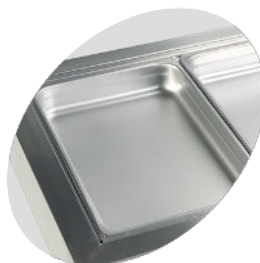


## CW3

### Cooling Well GN1/1

#### Product features:

- . Accepts GN1/1 pans (Not supplied)
- . Stainless steel 304 interior
- . Stainless steel 304 exterior
- . Static cooling
- . Electronic thermostat
- . Suitable for build-in



Designed for GN1/1 pans, not supplied

Automatic evaporation of defrost water



[Users Manual](#)



[Users Manual](#)



[Spareparts](#)



[Drawings](#)



[Wiring Diagram](#)

## Technical data

Climate Class	04+/ST
Temperature Range, °C	2 to 8
Gross Volume, l.	104
Net. Volume, l.	102
External Dimensions, WxDxH	1102x678x536
Build-in Dimensions, WxD	1075x650
Packing Dimensions, WxDxH	1150x730x680
40'ft Container load, pcs	96
Lid	-
Dividers	4, 520x20
Exterior	SS304
Interior	SS304
Castors/Feet	-
Lock	No
Voltage/Frequency, V/Hz.	220-240/50
Rated Input Power, W.	250
Energy Consumption, kWh/24h.	-
Gross Weight, kg.	55
Net. Weight, kg.	50
Noise Level, dB(A)	42
Type of Cooling	Static
Type of Defrost	Automatic
Type of Control	Electronic
Thermometer	Yes
Refrigerant	R134a
Charge, g.	130