

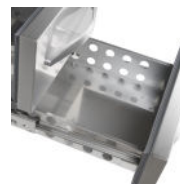
UC5240

Under Counter GN1/1



Product Features

- Stainless steel
- Automatic defrost
- GN1/1 Drawers
- Adjustable legs
- Ventilated cooling



GN1/1 drawers



Strong castors as option

Design and Material		Measures and Content		Power and Consumption		
Door No & Type		Temperature Range	°C	+2 to +8	Energy Class	C
Shelves No & Type		Climate Class		4	Energy Consumption	kWh/24h 2.15
Drawers	pcs 4 GN1/1 drawers	Gross / Net Weight	kg	95 / 82	Annual Energy Cons.	kWh/year 785
Feet / Legs	4 adjustable legs	Gross / Net Volume	l	180 / 170	Input Power	W 300
Exterior Finish	SS304	Cooling and Functions		Voltage / Frequency	V/Hz	220-240/50
Interior Finish	SS304	Type of Controller		Electronic	Noise Level	dB(A) 42
		Type of Cooling		Ventilated	Dimensions	
		Type of Defrost		Automatic	Internal Dimension (WxDxH)	mm 902 x 530 x 389
		Refrigerant		R600a	External Dimension (WxDxH)	mm 1360 x 700 x 670
		Refrigerant Charge	g	85	Packed Dimension (WxDxH)	mm 1405 x 750 x 720
		Thermometer		Yes	40ft Container Load	pcs 72