

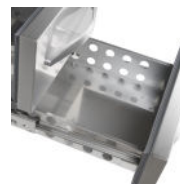
UC5360

Under Counter GN1/1



Product Features

- Stainless steel
- Automatic defrost
- GN1/1 Drawers
- Adjustable legs
- Ventilated cooling



GN1/1 drawers



Strong castors as option

Design and Material		Measures and Content		Power and Consumption		
Door No & Type		Temperature Range	°C	+2 to +8	Energy Class	C
Shelves No & Type		Climate Class		4	Energy Consumption	kWh/24h 2.51
Drawers	pcs 6 GN1/1 drawers	Gross / Net Weight	kg	135 / 125	Annual Energy Cons.	kWh/year 916
Feet / Legs 4 adjustable legs		Gross / Net Volume	l	277 / 262	Input Power	W 300
Exterior Finish SS304		Cooling and Functions		Voltage / Frequency	V/Hz	220-240/50
Interior Finish SS304		Type of Controller	Electronic		Noise Level	dB(A) 42
		Type of Cooling	Ventilated		Dimensions	
		Type of Defrost	Automatic		Internal Dimension (WxDxH)	mm 1337 x 530 x 389
		Refrigerant	R600a		External Dimension (WxDxH)	mm 1795 x 700 x 670
		Refrigerant Charge	g	85	Packed Dimension (WxDxH)	mm 1830 x 750 x 720
		Thermometer	Yes		40ft Container Load	pcs 54